



AURIVA

NEXT-GENERATION BREEDING



Sires directory

BLONDE D'AQUITAINE

2025

EDITORIAL

Our 2024-2025 genetic line-up features a mix of new and confirmed bulls covering the basic breed fundamentals to the introduction of new traits. AURIVA offers progressive livestock farmers a wide choice of bulls from a broad spectrum of origins for all your AI requirements. For improvements in terms of herd efficiency, profitability and style, or easier calving without compromising the quality of maiden heifer calves.

It is due to the probing work carried out by our team of AI operatives that we can offer you Elite sires via a structured progeny evaluation system that guarantees reliable genetic values, and using genomics to constantly and rapidly refine our choice of bulls that are even more in line with your expectations.

For your herd in general, as for each of your heifers, you will find in this 2025 catalogue a wide range of bulls that meet your selection objectives and allow your herd to prosper.

Enjoy the read.

CONTENTS

New & Top Blonde sires	03
More kilos and more performance	04
Born under a new star	05
Equilibre Sires	06
Morphology Sires	14
Easy-calving Sires	18
Interview EARL Augeau (breeding)	20
Early preview sires	24
Polled sires	26
Iboval sires	29
Young meat sires	30
Summary Table	32
Which sire for which daughter?	34

	SEXED FEMALE
	SEXED MALE
	SEXED FEMALE/MALE
	SEXED ULTRA2M
	SEXED ULTRA4M

* : Limited female-sexed availability
 * : Limited male-sexed availability
 * : Limited availability of conventional semen
 ** : subject to production

GENETIC ORIGINALITY

POLLED

IBOVAL

BULL PROFILES

NEW	PALLAS	07	
NEW	PEGASE	08	
NEW	PATUA	09	
	NARKO	10	
	ORIGAMI	11	
	NEKETI	12	
	NARUTO	13	
	NACERY	13	
			EQUILIBRE
NEW	PEPINO	15	
	RAPACE	16	
	LATINO	16	
NEW	PONT AVEN	17	
	PANTZO	17	
			MORPHOLOGY
	ONDENC	19	
	PYHA	21	
	ROD	22	
	PITCHOUN	22	
NEW	RAMI	23	
	LARGO	23	
			EASY-CALVING
NEW	TENGU	25	
NEW	TARANIS	25	
			EARLY PREVIEW
	NIBIRU	27	
	SELF P	27	
	RELAX PP	28	
	SIGMA PP	28	
			POLLED
NEW	STEWBALL	29	
			IBOVAL
	MELKIOR	30	
	NAHIKO	30	
	GLACON	31	
	GAZOU	31	
			YOUNG MEAT

A YEAR RICH IN NEW SIRES



PALLAS

Milk production : 109
Maternal qualities : 112
Muscle development : 113



PEGASE

Easy calving : 100
Milk production : 113
Muscle development : 114



PATUA

Milk production : 108
Growth capacity : 110
Overall index at weaning : 112



PEPINO

Muscle development : 106
Bone structure : 112
Maternal qualities : 106



PONT AVEN

Easy calving : 103
Bone structure : 113
Overall maternal qualities : 110



RAMI

Easy calving : 121
Overall index at weaning : 120
Overall maternal qualities : 124



TENGU

Bone structure : 113
Overall index at weaning : 114
Overall maternal qualities : 115



TARANIS

Growth capacity : 109
Suckling aptitude : 117
Overall maternal qualities : 121

TOP AURIVA BLONDE SIRES

Whether new or confirmed, you can, at a glance, identify your future AI sires as per your specific criteria!



MATERNAL ABILITIES

For fertile dairy cows with excellent calving ability, promoting vitality, health and maximum growth in your calves.

PEGASE - PALLAS - PYHA
ORIGAMI - ONDENC
JABU



EASY CALVING

To ensure the first calving and high performance: beef and marketable qualities in males and maternal qualities in females that will become good replacement heifers.

RAMI - PYHA
ROD - PITCHOUN
ONDENC



MORPHOLOGY

For powerful, elegant animals with high growth potential and large females with heavy carcasses.

RAPACE - PONT AVEN
PEPINO - NEKETI
LATINO



BREED QUALITIES

For competition animals or livestock with impeccable morphology for breeders who like the Blonde style.

PALLAS - PATUA
PANTZO - NACERY
LATINO



SERENITY

For easy rearing stock, for easy and predictable herd management.

PYHA - PEGASE
ROD - ONDENC
NARKO



GENETIC ORIGINALITY

For breeders seeking originality and diversity whilst maintaining performance and reliability.

PONT AVEN - PEPINO
PANTZO - NARUTO
TENGU

MORE KILOS AND MORE PERFORMANCE WITH AURIVA BULLS



At Auriva we have exceptional performance bulls for you to choose from:

73 % of our bulls have an **IVMAT** index of **110** or more

43 % of our bulls have an **ISEVR** index of **110** or more

AND WITH AURIVA BULLS YOU GET*:

+5 kg
at weaning with
CRsev

+5 pts
of DM at weaning with
DMsev

+1 pt
of DS at weaning with
DSsev

+6 kg
on generation progeny
at weaning with ALait

WITH AURIVA'S BEST BULLS YOU GET

NARUTO
NARKO
ONDENC
JABU
LATINO

+25 kg
at weaning with an ave
CRsev of 115

NARUTO
RAMI
ROD
LEGO
MARENGO

+10 pts
of DM at weaning with an
ave DMsev of 118

NARUTO
PONT AVEN
TENGU
LATINO
JABU

+7 pts
of DS at weaning with an
ave DSsev 115

PEGASE
TARANIS
ROD
PALLAS
GAELIC

+16 kg
on 2nd generation
progeny at weaning with
an ave ALait of 116

Average results for all bulls in our range, excluding polled and lboval sires, when compared with the breed average.

PLait = Milk production
IQMqms = Maternal qualities index
CRsev = Growth capacity at weaning

DSsev = Bone structure at weaning
DMsev = Muscle development at weaning
IFNAIS = easy calving index

ISEVR = overall index at weaning
IVMAT = Overall maternal qualities index
ALait = Suckling aptitude



BORN UNDER A NEW STAR

Genetic variability, original bloodlines, the very core of Blonde d'Aquitaine genetics is the diversity and revamping of our range of bulls. Find out with bulls PONT AVEN and ROD how exceptional new bloodlines are spawned.

PONT AVEN – ORIGINALITY AND BREED QUALITIES

PONT AVEN was born on David BASSET's AGRI BLONDES farm in the Côtes-d'Armor (Brittany). He is the 1st bull calf out of LIVEBOX (FABULEUX/ARAMIS), an MTE-qualified¹ cow and is by MARVELOUS (EMIR JPM/HIBERNATUS).



LIVEBOX, PONT AVEN's dam

The dam line can be traced back to the cow TURNER, matriarch of the breeding stock at Lorinquer (Brittany). David BASSET purchased embryos from AURIVA from the

mating of TURNER with ARAMIS, the same mating that had previously produced the sire GINKGO. It was a gamble that paid off for David as the embryos resulted in three cows, including GALAXIE, the granddam of PONT AVEN and GASPESIE, the dam of TRISKELL, a bull that has been selected for progeny confirmation testing.

LIVEBOX, who boasts an 80 A body score and indexes of 115 for Milk and 122 for IVMAT, is the progeny of GALAXIE sired by FABULEUX (TRIO/ULHANE). FABULEUX is himself a bull with an original pedigree stemming from an AURIVA embryo.

PONT AVEN's sire MARVELOUS is a naturally bred bull born and standing at the Sazy farm for natural service on cows and heifers. MARVELOUS is the son of the famous UNIQUE, the daughter of HIBERNATUS, and none other than the dam of well-known Blond bulls FRIPON, MALIEN and NOREPERE.

Using PONT AVEN on your herd will let you introduce the mix of these two original pedigrees. PONT AVEN's progeny are uniform, characterised by a mix of fine bone structure and breed qualities. His indexes are nearly all positive and complete, his 103 easy-calving score makes him suitable for use on good-sized heifers and all types of cows.

ROD – ORIGINALITY AND PERFORMANCE

ROD was born on the MICHAUD brothers' GAEC BARAUDERIE farm in the Deux-Sèvres (West France). He is the son of JABU and INTERLUDE (FAUCON / VICTOR), a pretty cow who stands out from the herd by her mixed breed-conformation format and her excellent indexes (109 IFNAIS, 116 ALait and 121 IVMAT). INTERLUDE is a remarkable cow, not only for her indexes, but also because of her average calving interval of 365 days after 8 calves. Farmer Etienne MICHAUD tells us, "INTERLUDE is a stand-out cow in the herd, she has given us some lovely calves for us, that have gone through the testing station. ROD was a very fine calf who outperformed all other young bulls in the testing station, with his original pedigree and excellent maternal qualities you will be adding strength in depth to your herd."

INTERLUDE was selected by AURIVA to be bred from in programme because of her good production results, her indexes and for the originality of her pedigree. The mating with JABU combines maternal qualities including an easy calving aptitude of over 100, plus adds size and pronounced

muscling while retaining an excellent easy-calving score of over 100. The JABU plus FAUCON/VICTOR mix is surprising as it was a little used for AI pedigree.



INTERLUDE, ROD's dam

¹MTE = Recognised dam of Elite bulls

"WANT IT ALL!"

Discover below the bulls with the most comprehensive profiles when it comes to both production of high-performance weanlings and efficient replacement heifers.

These bulls have been tested and their daughters verified at AURIVA's Maternal Qualities station in Casteljalous to measure each bull's genetic impact on his progeny.

They offer the best of those beef abilities you need for better value from your sales and the maternal qualities that can guarantee your herd's productivity.

AN BALANCED BULL IS:



Growth



Muscle development



Calving abilities



Suckling abilities

THE BEST BULLS IN THE SECTOR

PALLAS

SIRE: GALIAX
MGS: TOKAPI



MAIN HIGHLIGHTS:

- MILK
- BREED QUALITIES
- MUSCLE DEVELOPMENT

RECOMMENDED FOR THE DAUGHTERS OF:

IPOD, LARRONDO,
NARUTO

PATUA

SIRE: FUXEEN
MGS: ELDORADO



MAIN HIGHLIGHTS:

- DAUGHTER'S CALVING
- MILK
- BREED QUALITIES

RECOMMENDED FOR THE DAUGHTERS OF:

JABU, LARGO,
MAGIC

PEGASE

SIRE: GALIAX
MGS: ORVIL



MAIN HIGHLIGHTS:

- MILK
- FERTILITY OF DAUGHTERS
- MUSCLE DEVELOPMENT

RECOMMENDED FOR THE DAUGHTERS OF:

LARGO, MAGIC,
NOTOS

NARKO

SIRE: JUNIO
MGS: ARAMIS



MAIN HIGHLIGHTS:

- GROWTH
- MUSCLE DEVELOPMENT
- LEGS

RECOMMENDED FOR THE DAUGHTERS OF:

FUXEEN, GALIAX,
JABU

NEKETI

SIRE: GAELIC
MGS: TOKAPI



MAIN HIGHLIGHTS:

- GROWTH
- DAUGHTER'S CALVING
- FUNCTIONAL STRENGTH

RECOMMENDED FOR THE DAUGHTERS OF:

GALIAX, HENAN,
GINKGO

NARUTO

SIRE: JACKPOT
MGS: FRELON



MAIN HIGHLIGHTS:

- GROWTH
- MUSCLE DEVELOPMENT
- DAUGHTER'S CALVING

RECOMMENDED FOR THE DAUGHTERS OF:

FUXEEN, GALIAX,
HASHTAG

PALLAS

NEW

FOR MATERNAL COWS



N°FR6414648189

Born on 01/04/2019 at EARL LABOURDETTE JEAN-PIERRE (64 SAUVETERRE DE BEARN)

Coat colouration gene: HOMOZYGOUS DARK

SIRE: GALIAX ♂
IVMAT: 114

♂ PGS: VIDOCQ
♀ PGD: SIDONIE

DAM: FLEOLE ♀
IFNAIS: 99

♂ MGS: TOKAPI
♀ MGD: USUELLE

PROVEN TRAITS ON TESTED PROGENY



- ▶ Muscle Development
- ▶ Milk production potential
- ▶ Breed qualities

Mixed type of sire with a very good topline, his progeny display fine bone structure and excellent breed qualities. Well-defined muscling and well put together back-end.

His daughters have plenty of width between the key hook bones and pin bones, for optimal calving conditions. Showing strong milking capacity, they can easily rear their calves for best possible calf growth and a head start on their peer group at weaning.

PALLAS improves cows' milking potential for rearing of quality store cattle, combining mixed conformation and breed qualities

96

CALVING EASE

BL.PF.24.1 (CD 0.89)

97

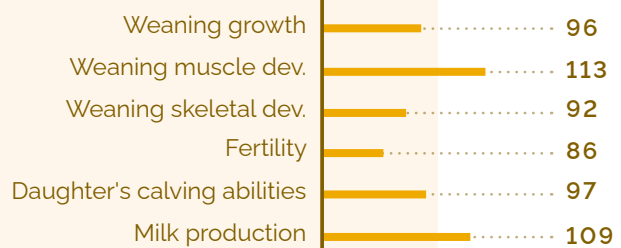
ISEVR

BL.PF.24.1 (CD 0.82)

112

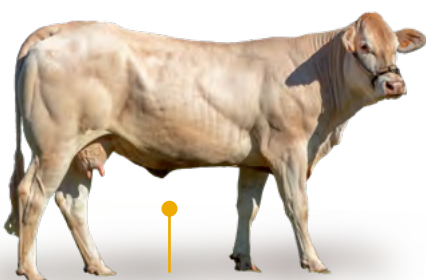
MATERNAL QUALITIES

BL.QM.24



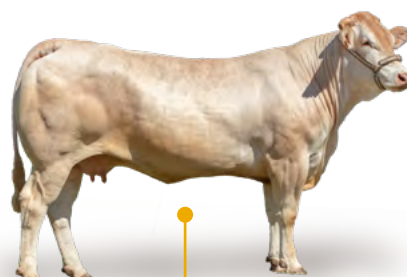
Recommended for the daughters of:

FRENCHY, FANION, IODELYS, JABU, JOLIUS, LARRONDO, MAGIC



SAFRANE

Born at GAEC TERRE BLONDE (47)



SOLFEGE

Born at DUROU VINCENT(40)

PEGASE

NEW

THE RENOWNED SIRE FOR MATERNAL QUALITIES



N°FR5355989467

Born on 28/03/2019 at EARL BORDELET (53 NEUILLY-LE-VENDIN)

Coat colouration gene: HOMOZYGOUS DARK

SIRE: GALIAX ♂
IVMAT: 114

♂ PGS: VIDOCQ
♀ PGD: SIDONIE

DAM: ENERGIE ♀
IVMAT: 104

♂ MGS: ORVIL
♀ MGD: AIRELLE

PROVEN TRAITS ON TESTED PROGENY



- ▶ Milk production
- ▶ Daughters' fertility
- ▶ Daughters' calving abilities
- ▶ Muscling potential

The predominantly muscled progeny of PEGASE display strong growth from weaning with a compact and wide topline and plenty of width in the back end for big, highly sought after stores.

His daughters retain this muscular potential throughout adulthood. Of medium size, they are easy to rear and displaying an excellent calving aptitude, his daughters stand out for their record milk production surpassing even that of GALIAX's daughters.

PEGASE is the perfect sire for improving both muscling and milk production, two criteria that have a major impact on your herd's efficiency.

100

CALVING EASE

BL.PF.24.1 (CD 0.89)

88

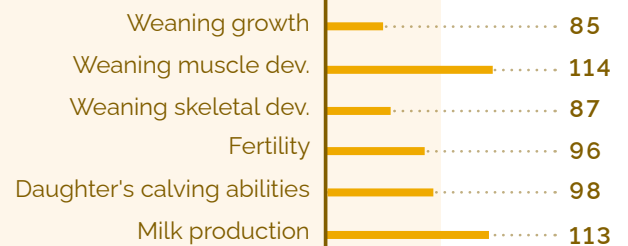
ISEVR

BL.PF.24.1(CD 0.82)

99

MATERNAL QUALITIES

BL.QM.24



Recommended for the daughters of:

LARGO, LARRONDO, MAGIC, NARUTO, NOTOS



SOURIS

Born at EARL LARQUIER (64)

PATUA

NEW

FOR PROGRESS WITHOUT COMPROMISE



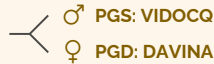
Subject to production availability

N°FR6414989957

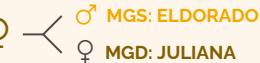
Born on 26/04/2019 at GAEC SORHUETA (64 IRISSARRY)

Coat colouration gene: HOMOZYGOUS DARK

SIRE: FUXEEN
IVMAT : 116



DAM: MAITANE
IVMAT : 101



PROVEN TRAITS ON TESTED PROGENY



- ▶ Daughter's calving abilities
- ▶ Milk production
- ▶ Breed qualities
- ▶ Mixed type

Rare by their uniformity, modern by their mixed format and well-structured bone structure, PATUA's progeny leave no one indifferent.

The topline is well-furnished, the pelvis well positioned and the muscles well defined. Balanced and racy, PATUA's daughters are also efficient cows with excellent calving ability and very good milkers.

This bull is a new addition to the AURIVA catalogue for females that combine production and elegance.

99

**CALVING
EASE**

BL.PF.24.1 (CD 0.88)

112

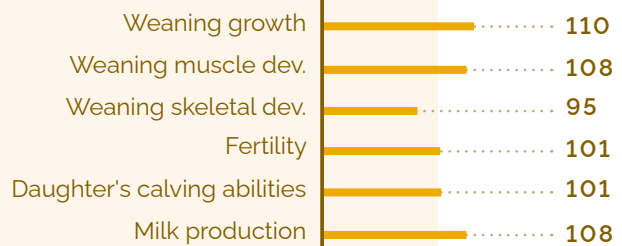
ISEVR

BL.PF.24.1(CD 0.76)

104

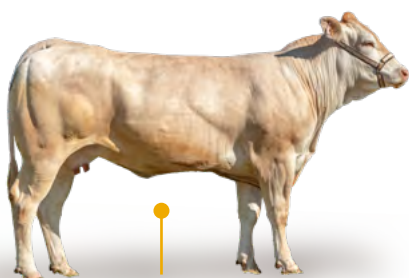
**MATERNAL
QUALITIES**

BL.QM.24



Recommended for the daughters of:

CABREL, CLIMAX, FRENCHY, HELLO, JABU, LARRONDO, MAGIC



SAVANTE

Born at GAEC MAITRENIA (64)



SOUMISE

Born at LARROQUE VALERIE (31)

NARKO

MUSCULAR PERFORMANCE



N°FR6414756075
 Born on 31/08/2017 at GAEC BARRY (64 LEMBEYE)
 Coat colouration gene: HOMOZYGOUS DARK

SIRE: JUNIO ♂
 IVMAT : 124

♂ PGS: ELVIS
 ♀ PGD: FALBALA

DAM: GARRIGUE ♀
 IFNAIS : 117

♂ MGS: ARAMIS
 ♀ MGD: ENOA

PROVEN TRAITS ON TESTED PROGENY



- ▶ Muscling potential
- ▶ Growth
- ▶ Functional strength
- ▶ Maternal qualities

NARKO's progeny stand out from weaning due to their mixed type conformation with a distinct leaning to heavy carcass format.

His progeny display a thick and wide topline, synonymous with the prime cuts, and the hindquarters are open, yet compact. The bone structure is commensurate with the potential muscling so there's a good skeletal development to support the growth potential especially during finishing young bulls.

The females are of a good size, very complete cows with plenty of depth and well put together and benefitting from good strong legs. NARKO sire harmonious, high-performance cows with excellent maternal aptitudes.

98

CALVING EASE

BL.PF.24.1 (CD 0.97)

122

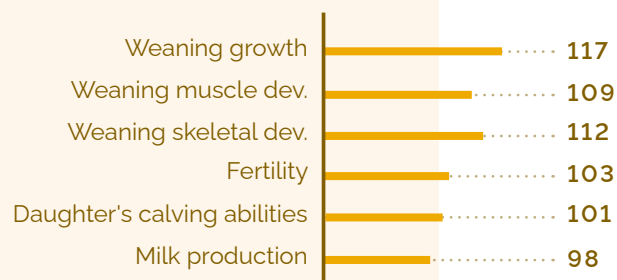
ISEVR

BL.PF.24.1(CD 0.92)

106

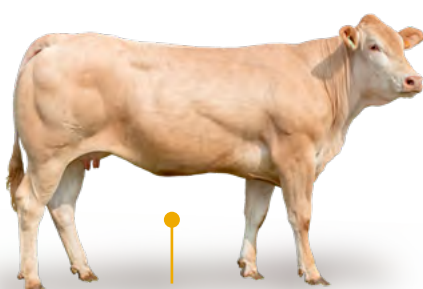
MATERNAL QUALITIES

BL.QM.24



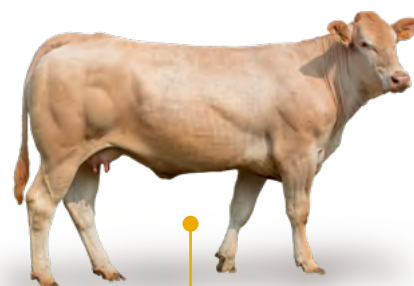
Recommended for the daughters of:

ENVOL, FANION, FUXEEN, GALIAX, ILLUSTRE, JABU, JOB, LARGO



RAVISSANTE

Born at SCEA BERDOU (31)



RENONCULE

Born at GAEC DUCOS (31)

ORIGAMI

FOR MILK AND VERY PRONOUNCED BREED QUALITIES



N°FR6414787866

Born on 13/04/2018 at EARL LARROUDE (64 NABAS)

Coat colouration gene: HETEROZYGOUS

SIRE: FUXEEN ♂
IVMAT : 116

♂ PGS: VIDOCQ
♀ PGD: DAVINA

DAM: LOLITA ♀
IVMAT : 109

♂ MGS: CLIMAX
♀ MGD: VANDA

PROVEN TRAITS ON TESTED PROGENY

- ▶ Milk production
- ▶ Daughters' calving abilities
- ▶ Breed qualities



ORIGAMI's progeny can be characterised as being mixed profile livestock with fine bone structure. Excellent hindquarters, his calves express a lot of muscle definition.

Elegant with pronounced breed qualities, ORIGAMI's daughters are proven mothers. In our testing station, his heifers displayed 100% easy calving and ranked among the very best tested for their milk production.

A true improver of maternal qualities, ORIGAMI is a sire you would choose for stylish replacement heifers with excellent maternal qualities.

97

**CALVING
EASE**

BL.PF.24.1 (CD 0.89)

107

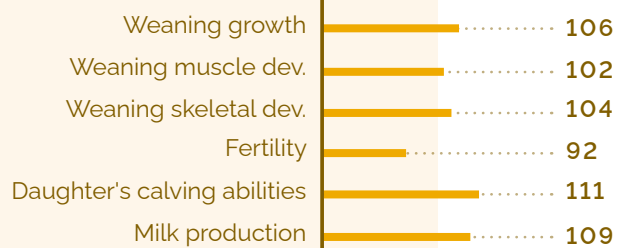
ISEVR

BL.PF.24.1(CD 0.80)

93

**MATERNAL
QUALITIES**

BL.QM.24



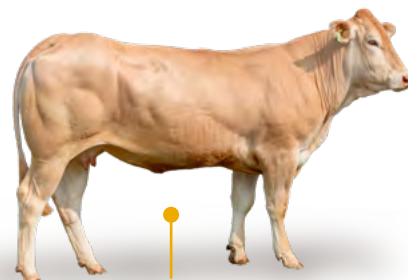
Recommended for the daughters of:

EDISON, FRENCHY, GAELIC, LARRONDO, LATSARI, MAGIC, NARUTO



ROYCE

Born at AURIVA-ELEVAGE (47)



9711

Born at GAEC DUPRAT (31)

NEKETI

MAXIMUM PRODUCTIVITY



N°FR6414656782

Born on 22/05/2017 at GAEC CASAMAYOU (64 SAUVETERRE DE BEARN)

Coat colouration gene: HOMOZYGOUS DARK

SIRE: GAELIC
IVMAT : 117 ♂



PGS: VELOURS

PGD: CAMOMILLE

DAM: ETAMINE

ISU : 110 ♀

MGS: TOKAPI

MGD: THERESE

PROVEN TRAITS ON TESTED PROGENY



- ▶ Functional strength
- ▶ Daughters' calving abilities
- ▶ Successful AI breeding from daughters

Combining diversity and growth potential, NEKETI's progeny are consistent with plenty of length and muscular width in the topline and hindquarters. As well as this strong beef abilities, his progeny display excellent functionality.

NEKETI's daughters have good legs, strong backs and good width respectively between the hook and pin bones. Efficient breeding stock showing excellent AI success as maiden heifers and after their first calf. Calving down easily, they also benefit from plenty of milk to rear their calf.



CALVING EASE

BL.PF.24.1 (CD 0.99)



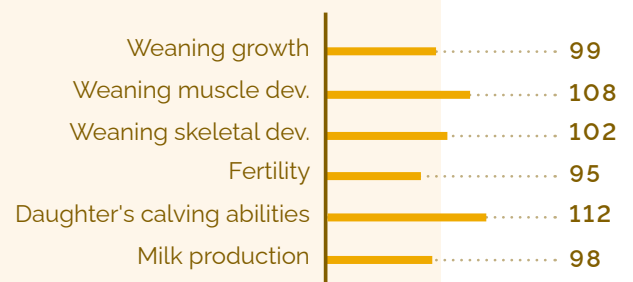
ISEVR

BL.PF.24.1(CD 0.95)



MATERNAL QUALITIES

BL.QM.24



Recommended for the daughters of:

ARAMIS, ANIS, CABREL, CLIMAX, CLIC, ENVOL, EUSKADI, EDISON, FANION, GALIAX, HENAN, JABU



PIZANA

Born at MME CARRICONDO MARIE LAURE (64)



PLUIE

Born at EARL BRANA (64)

NARUTO

OUTSTANDING MORPHOLOGY

N°FR7934931978

Born on 11/03/2017 at GAEC LES PATUREAUX (79 EPANNES)
Coat colouration gene: HOMOZYGOUS DARK

SIRE: JACKPOT ♂
IVMAT:110

♂ PGS: HARIBO
♀ PGD: FERENICE

DAM: JAUGE ♀
IVMAT:106

♂ MGS: FRELON
♀ MGD: DISTANCE

PROVEN TRAITS ON TESTED PROGENY

- ▶ Original pedigree
- ▶ Growth potential
- ▶ Muscle Development
- ▶ Daughters' calving abilities



95

**CALVING
EASE**

BL.PF.24.1 (CD 0.99)

132

ISEVR

BL.PF.24.1(CD 0.98)

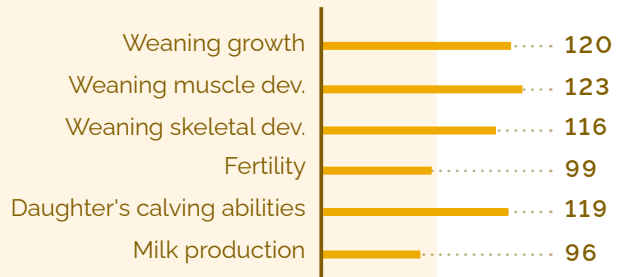
121

**MATERNAL
QUALITIES**

BL.QM.24

Recommended for the daughters of:

FUXEEN, FANION, GALIAX, GAELIC, GINKGO, HENAN,
HASHTAG, JABU, LATSARI



NACERY

DIVERSITY AND AESTHETIC APPEAL

N°FR5655921562

Born on 05/05/2017 at EARL DE KERMORVAN (56 PONT SCORFF)
Coat colouration gene: HOMOZYGOUS DARK

SIRE: EDISON ♂
IVMAT:110

♂ PGS: TILBURY
♀ PGD: ATHENES

DAM: HINDRA ♀
IVMAT:108

♂ MGS: ANGELO
♀ MGD: UKRAINE

PROVEN TRAITS ON TESTED PROGENY

- ▶ Muscle Development
- ▶ Breed qualities
- ▶ Progeny uniformity



97

**CALVING
EASE**

BL.PF.24.1 (CD 0.97)

105

ISEVR

BL.PF.24.1(CD 0.91)

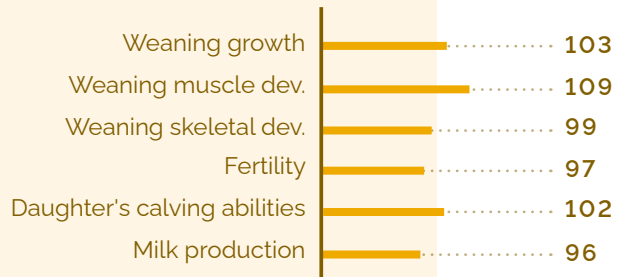
105

**MATERNAL
QUALITIES**

BL.QM.24

Recommended for the daughters of:

FUXEEN, FANION, FRENCHY, GAELIC, JAZZMAN, IPOD,
JABU, MARENGO



"I WANT POWER AND GROWTH"

The Morphology section in the Auriva catalogue features bulls with distinguished production thanks to great homogeneity in their progeny's phenotype.

It's the category of choice for producing top quality females, but equally uncompromising on the level of maternal aptitudes required and vital for the rearing of quality replacements.

A SIRE CATEGORISED AS "MORPHO" IS:



Growth



High adult morphology



Superior Blonde style



Genetic accumulation on the maternal side

THE BEST BULLS IN THE SECTOR

PEPINO

SIRE: HORFE
MGS: BRASIER



MAIN HIGHLIGHTS:

- DAUGHTERS' CALVING ABILITIES
- SKELETAL DEVELOPMENT
- ORIGINAL PEDIGREE

RECOMMENDED FOR THE DAUGHTERS OF:

FUXEEN, MEKONG, NARUTO

PONT AVEN

SIRE: MARVELOUS
MGS: FABULEUX



MAIN HIGHLIGHTS:

- ORIGINAL GENETIC
- BREED QUALITIES
- SKELETAL DEVELOPMENT

RECOMMENDED FOR THE DAUGHTERS OF:

GAELIC, MARENGO, JABU

RAPACE

SIRE: JABU
MGS: CALINO



MAIN HIGHLIGHTS:

- SKELETAL DEVELOPMENT
- BREED QUALITIES
- MATERNAL POTENTIAL

RECOMMENDED FOR THE DAUGHTERS OF:

MAGIC, NARUTO, ONDENC

LATINO

SIRE: HIPSTER
MGS: BERLIOZ



MAIN HIGHLIGHTS:

- MILK
- SKELETAL DEVELOPMENT
- BREED QUALITIES

RECOMMENDED FOR THE DAUGHTERS OF:

FUXEEN, GALIAX, LARGO

PEPINO

NEW

POWER AND ORIGINALITY



N°FR4474581709

Born on 23/04/2019 at M BESNIER NORBERT (44 VAY)

Coat colouration gene: HOMOZYGOUS DARK

SIRE: HORFE ♂
IVMAT : 107

♂ PGS: ETE
♀ PGD: EURASIENNE

DAM: JOYEUSE ♀
IVMAT : 113

♂ MGS: BRASIER
♀ MGD: GODICHE

PROVEN TRAITS ON TESTED PROGENY

- ▶ Daughters' calving abilities
- ▶ Skeletal potential
- ▶ Uniformity of progeny



PEPINO's dam line displays proven maternal qualities which when added to the muscular qualities of his sire HORFE makes PEPINO a very interesting prospect.

His progeny express loads of length with significant development potential and muscling. His daughters are genuine breeding cattle - 100% easy calving as confirmed during testing. Powerful cows displaying bags of breed qualities in the back, they stand out by their uniformity which is the guarantee of a bull who sets his stamp on his progeny.

106

**CALVING
EASE**

BL.PF.24.1 (CD 0.91)

115

ISEVR

BL.PF.24.1(CD 0.84)

106

**MATERNAL
QUALITIES**

BL.QM.24



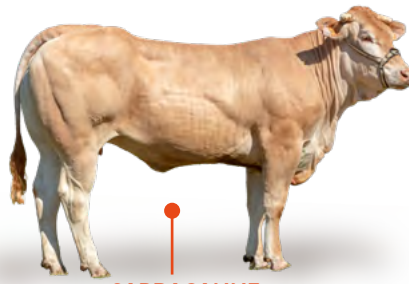
Recommended for the daughters of:

FUXEEN, GALIAX, HENAN, HASHTAG, MARENGO



SANGUINE

Born at M. LASSALE REGIS (64)



SARBACANNE

Born at GAEC LA SAINT GERARD (31)

RAPACE

AESTHETIC APPEAL AND EFFICACY



N°FR6415469481

Born on 03/11/2020 at GAEC IRIGAYA (64 JUXUE)

Coat colouration gene: HOMOZYGOUS DARK

SIRE: JABU ♂
IVMAT: 119

♂ PGS: ANIS
♀ PGD: GONDOLE

DAM: GAZELLE ♀
IVMAT: 115

♂ MGS: CALINO
♀ MGD: POLKA

PROVEN TRAITS ON TESTED PROGENY

- ▶ Accumulation of maternal qualities
- ▶ Skeletal potential
- ▶ Breed qualities



106

CALVING EASE

BL.PF.24.1 (CD 0.91)

116

ISEVR

BL.PF.24.1(CD 0.77)

123

IVMAT

BL.PF.24.1(CD 0.55)



Recommended for the daughters of:

GAELIC, HASHTAG, LEGO, MARENGO, MAGIC, NARUTO, ONDENC



LATINO

MORE THAN JUST SHOW COWS



N°FR8564824755

Born on 13/08/2015 at GAEC DU BREUIL (85 ST PHILBERT DE BOUAINÉ)

Coat colouration gene: HOMOZYGOUS DARK

SIRE: HIPSTER ♂
IVMAT: 123

♂ PGS: URANIUM
♀ PGD: URIA

DAM: GINA ♀
ISU: 112

♂ MGS: BERLIOZ
♀ MGD: DAVINA

PROVEN TRAITS ON TESTED PROGENY

- ▶ Maternal qualities
- ▶ Breed qualities
- ▶ Skeletal potential



91

CALVING EASE

BL.PF.24.1 (CD 0.94)

114

ISEVR

BL.PF.24.1(CD 0.88)

105

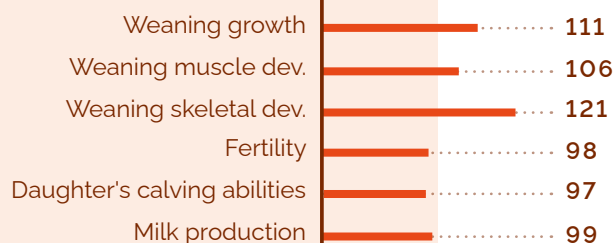
MATERNAL QUALITIES

BL.QM.24



Recommended for the daughters of:

ANIS, ANGELO, ENVOL, FUXEEN, GAELIC, GALIAX, HASHTAG, MARENGO, MAGIC



PONT AVEN

ORIGINALITY AND BREED QUALITIES

NEW



N°FR2278511355
Born on 08/07/2019 at AGRI BLONDES (22 PLESSALA)
Coat colouration gene: HOMOZYGOUS DARK

SIRE: MARVELOUS ♂ PGS: EMIR JPM
IFNAIS: 97 ♀ PGD: UNIQUE

DAM: LIVEBOX ♀ MGS: FABULEUX
IVMAT: 122 ♀ MGD: GALAXIE

PROVEN TRAITS ON TESTED PROGENY

- ▶ Original pedigree
- ▶ Top performance dam's line
- ▶ Breed qualities



103

CALVING EASE

BL.PF.24.1 (CD 0.89)

102

ISEVR

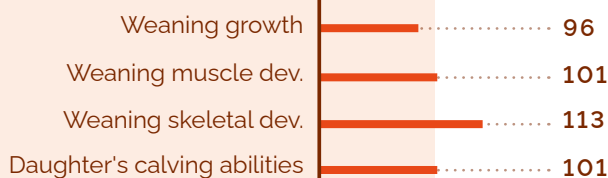
BL.PF.24.1(CD 0.82)

110

IVMAT

BL.PF.24.1(CD 0.49)

Recommended for the daughters of:
FUKEEN, GAELIC, IPOD, JABU, JETIN, LEHEN, MARENGO



PANTZO

A STYLE OF HIS OWN



N°FR6414789608
Born on 22/11/2019 at M JOCOUP (64 BRISCOUS)
Coat colouration gene: HOMOZYGOUS DARK

SIRE: IODELYS ♂ PGS: FROMANT
IVMAT: 108 ♀ PGD: GIPSI

DAM: MASSILIA ♀ MGS: BERLIOZ
ISU: 113 ♀ MGD: DUCHESSE

PROVEN TRAITS ON TESTED PROGENY

- ▶ Muscle Development
- ▶ Breed qualities
- ▶ Prestigious dam's line



94

CALVING EASE

BL.PF.24.1 (CD 0.91)

99

ISEVR

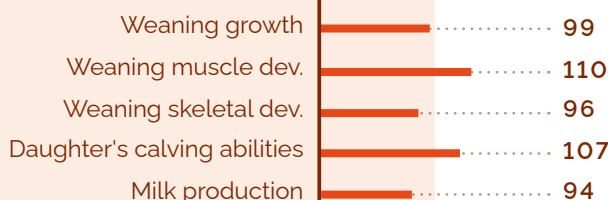
BL.PF.24.1(CD 0.83)

96

IVMAT

BL.PF.24.1(CD 0.57)

Recommended for the daughters of:
FUKEEN, GAELIC, ILLUSTRÉ, IPOD, JABU, MARENGO, NARUTO



MORPHOLOGY

"I WANT EASY CALVING AND HIGH QUALITY"

If you are seeking bulls with proven calving ease to use with heifers, this section is for you.

And their qualities don't end there: easy calving, growing, quality weanlings with maternal potential so you can keep replacement heifers after the first calving on your best females.

AN EASY-CALVING BULL MEANS:



Easy Calving



Growth at weaning



Genetic accumulation on maternal traits

THE BEST BULLS IN THE SECTOR

PYHA

SIRE: FUXEEN
MGS: HOULALA



MAIN HIGHLIGHTS:

- VERY EASY CALVING
- MILK
- MUSCLE DEVELOPMENT

RECOMMENDED FOR THE DAUGHTERS OF:

LARGO, MEKONG, NARUTO

ROD

SIRE: JABU
MGS: FAUCON



MAIN HIGHLIGHTS:

- EASY CALVING
- MUSCLE DEVELOPMENT
- ACCUMULATION OF MATERNAL TRAITS

RECOMMENDED FOR THE DAUGHTERS OF:

LARRONDO, MARENGO, ONDENC

RAMI

SIRE: HASHTAG
MGS: FUXEEN



MAIN HIGHLIGHTS:

- VERY EASY CALVING
- MUSCLE DEVELOPMENT
- ACCUMULATION OF MATERNAL TRAITS

RECOMMENDED FOR THE DAUGHTERS OF:

JABU, NARUTO, NOTOS

ONDENC

SIRE: FROOME
MGS: CLIMAX



MAIN HIGHLIGHTS:

- GROWTH
- LEGS
- MILK

RECOMMENDED FOR THE DAUGHTERS OF:

LARGO, MAGIC, NARUTO

ONDENC

MULTI-PURPOSE SIRE



N°FR8160168929
 Born on 24/05/2018 at M MARAVAL (81 BERNAC)
 Coat colouration gene: HOMOZYGOUS DARK

SIRE: FROOME ♂
IVMAT: 111

♂ PGS: CANON
 ♀ PGD: CAFRINE

DAM: LIBERTA ♀
ISU: 106

♂ MGS: CLIMAX
 ♀ MGD: DIANA

PROVEN TRAITS ON TESTED PROGENY



- ▶ Fast growth
- ▶ Functional strength
- ▶ Daughters' suckling abilities

ONDENC is one of the most complete bulls in AURIVA's AI catalogue for use on both maiden heifers and cows.

Their trait of easy calving means that his semen can be associated with all types of females for very early growth potential in their progeny and the rearing of heavy stores.

Very functional, solid and easy to care for, ONDENC's daughters are easy to rear, display excellent maternal qualities of easy calving and superior milk production.

106

**CALVING
 EASE**

BL.PF.24.1 (CD 0.99)

124

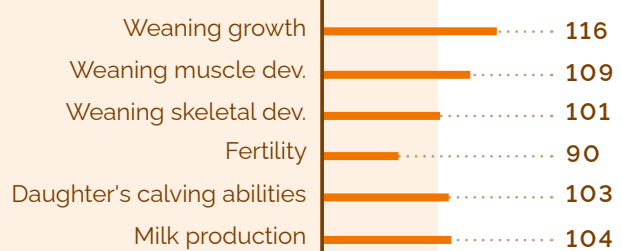
ISEVR

BL.PF.24.1(CD 0.98)

103

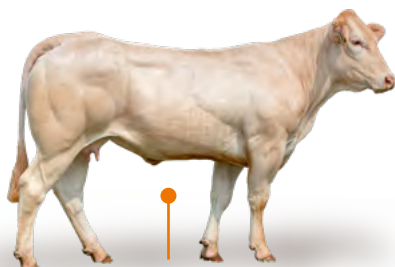
**MATERNAL
 QUALITIES**

BL.QM.24



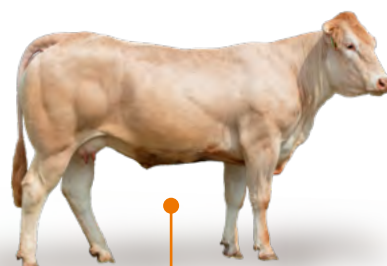
Recommended for the daughters of:

HASHTAG, JABU, IPOD, LARGO, NARUTO, MARENGO, NOTOS



REJANE

Born at ARROUY VINCENT (31)



REXINE

Born at EARL LA JANSOUNIE (81)

EASY CALVING

THE PRIDE OF AUGEAU BREEDING

Xavier AUGEAU – Lesparre-Médoc (33)



- EARL AUGEAU, a family farm, taken on by Xavier AUGEAU in 1996
- 240 ha of permanent pasture in an SSI
- 9 ha of vines - Uni Médoc cooperative cellar



- 100 Blond d'Aquitaine suckler cows
- Member of breed society and VA4 performance testing
- Rearing of stores, finishing of cull cows and sale of breeding stock
- Sale of fatstock within IGP "Boeuf de Bazas" quality scheme

Born on the AUGEAU stock farm in the heart of the Médoc wine-growing region of Bordeaux, PYHA has established himself as a key Easy-calving Blond sire. His results at the testing station confirm his maternal qualities, particularly in terms of his daughters' conformation and their quality and quantity of milk. Here we introduce you to PYHA and his breeder, Xavier AUGEAU.

PYHA is the result of putting FUXEEN on MOUETTE (her pedigree HOULALA/OULOU), a cow displaying one of the very best pedigrees on the AUGEAU farm with a 105 IVMAT index and 109 in ALait. This pedigree goes back to UTILE (JURANCON/HECTOR), a cow that qualified as MTE, again born on the farm in the 2000's and who produced CHOUETTE (OULOU/JURANCON), PYHA's maternal grand dam. Very quiet, breed type of stock with plenty of milk, **"it is this farm's best pedigree responsible for supplying the most calves to the testing station."**



MOUETTE, PYHA's dam

Keeping PYHA back as a future breeding sire was an obvious choice, as Xavier explains to us. He was an exceptional calf that stood out because of his back end, his breed qualities and his fine bone structure. I would have kept him here but I already have a lot of daughters of FUXEEN and HOULALA in the herd. I wouldn't have been able to use him much and this animal deserved a good career, which was why I offered him to AURIVA, following testing, as a stud bull.

It's a great source of pride to us, as it highlights the selection work carried out on our farm over many years.

Producing a bull of this quality is not the result of pure chance as it's the result of meticulous selection by the breeder. For Xavier, the first trait that he is looking for in his livestock is docility, which he describes as being "fundamental". **"I won't keep a heifer with a temperament as I want animals that are easy to handle."** Then, he looks at breed qualities and the mix: **"Starting with a herd that was very varied in size**

and conformation, we are today verging on some great uniformity in our livestock."

"Milk and calving ability traits have also accumulated over several generations in the herd, as shown by the average genetic level in the maternal pedigrees (ALait: 104 & AVEL: 101.5). "I've worked hard on the pelvis width and length, it's a major factor in making calving easier."

The farmer is also very involved in the selection scheme as he practices AI using semen from bulls in testing every year and for the past 3 years, he has rented a bull from AURIVA. "I'm very happy with this system as it allows me to add genetic variability every year." When it comes to choosing bulls, he listens to the advice of AURIVA's technical advisors to choose bulls that meet his objectives. Highly satisfied with AURIVA genetics, Xavier says: **"The bull that worked best for me was none other than FUXEEN, the sire of PYHA, who was recommended to me by my advisor. He has brought a lot of docility, conformation and breed qualities! I kept all the females as they calve easily and they produce very nice stores."**



Xavier Augeau and one of his Blond d'Aquitaine cows

Like his sire, PYHA's results now speak for themselves, for example 114 in IFNAIS, 125 in IVMAT

and indexed Maternal Qualities of 109 in PLait and 102 in IQM. He has successfully completed the final stage of a long selection process and will pass on his remarkable qualities to his progeny, meeting the expectations of many breeders.

PYHA

THE NEW FUXEEN



N°FR3330237891

Born on 19/01/2019 at EARL AUGEAU (33 LESPARRE MEDOC)

Coat colouration gene: HETEROZYGOUS

SIRE: FUXEEN
IVMAT : 116



♂ PGS: VIDOCQ
♀ PGD: DAVINA

DAM: MOUETTE
ISU : 110



♂ MGS: HOULALA
♀ MGD: CHOUETTE

PROVEN TRAITS ON TESTED PROGENY

- ▶ Proven easy calving
- ▶ Mixed & bone fineness
- ▶ Maternal qualities



Confirmed easy-calving traits and maternal qualities, FUXEEN has, at last, his worthy heir. Though PYHA inherits his sire's strong points he outpoints him in the conformation of his progeny, bringing a lighter bone structure and more uniformity in the mix.

Complete, his calves display very strong muscling and are strong. PYHA's daughters display excellent calving and milking aptitudes. They will be efficient herd cows transferring to their own progeny everything they need to express their full potential.

114

**CALVING
EASE**

BL.PF.24.1 (CD 0.99)

118

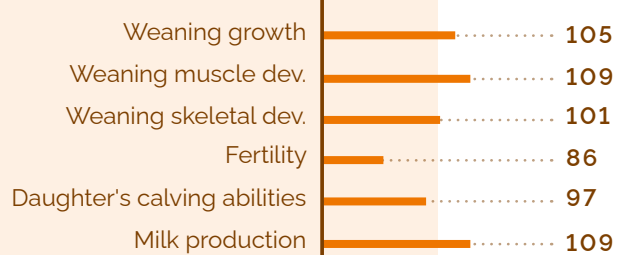
ISEVR

BL.PF.24.1(CD 0.97)

102

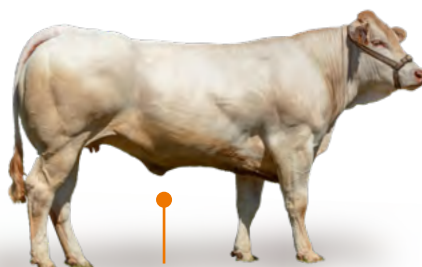
**MATERNAL
QUALITIES**

BL.QM.24



Recommended for the daughters of:

GAELIC, HENAN, HASHTAG, ILLUSTRÉ, IODELYS, IPOD, JAPAN, LARGO, NARUTO



SARDINE

Born at M. LASSALE REGIS (64)

EASY CALVING

ROD

ORIGINALITY AND PERFORMANCE



N°FR7959374057

Born on 02/08/2020 at GAEC BARAUDERIE (79 SAINT MAURICE ETUSSON)

Coat colouration gene: HOMOZYGOUS DARK

SIRE: JABU ♂ PGS: ANIS
IVMAT : 119 ♀ PGD: GONDOLE

DAM: INTERLUDE ♀ MGS: FAUCON
ISU : 121 ♀ MGD: FLUTE

PROVEN TRAITS ON TESTED PROGENY

- ▶ Proven easy calving
- ▶ Muscling potential
- ▶ Accumulation of maternal traits



110

CALVING EASE

BL.PF.24.1 (CD 0.92)

110

ISEVR

BL.PF.24.1(CD 0.86)

122

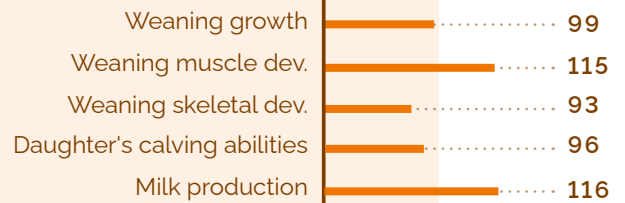
IVMAT

BL.PF.24.1(CD 0.58)



Recommended for the daughters of:

HASHTAG, LATINO, LARRONDO, MARENGO, MERIADEC



PITCHOUN

THE FUTURE GENERATION



N°FR7969741300

Born on 28/08/2019 at EARL ELEVAGE COLLARDEAU (79 VILLIERS SUR CHIZE)

Coat colouration gene: HOMOZYGOUS DARK

SIRE: HASHTAG ♂ PGS: ARAMIS
IFNAIS : 123 ♀ PGD: DANI

DAM: LAS VEGAS ♀ MGS: ELDORADO
IVMAT : 100 ♀ MGD: HOLLYWOOD

PROVEN TRAITS ON TESTED PROGENY

- ▶ Very high level of easy calving
- ▶ Muscle Development
- ▶ Breed qualities



114

CALVING EASE

BL.PF.24.1 (CD 0.91)

105

ISEVR

BL.PF.24.1(CD 0.82)

111

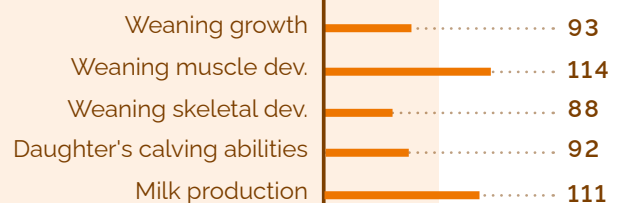
IVMAT

BL.PF.24.1(CD 0.55)



Recommended for the daughters of:

IPOD, JAPAN, MARENGO, MAGIC, NARUTO, NEKETI



RAMI

EASY & EFFICIENT

NEW



N°FR8160031547

Born on 06/10/2020 at GAEC MONTS ET VALLEES (81 TEILLET)

Coat colouration gene: HOMOZYGOUS DARK

SIRE: HASHTAG ♂ PGS: ARAMIS
IFNAIS : 123 ♀ PGD: DANI

DAM: NEIGEUSE ♀ MGS: FUXEEN
IVMAT : 105 ♀ MGD: JESS

PROVEN TRAITS ON TESTED PROGENY

- ▶ Very high level of easy calving
- ▶ Fast growth
- ▶ Muscling potential



121

CALVING EASE

BL.PF.24.1 (CD 0.83)

120

ISEVR

BL.PF.24.1(CD 0.70)

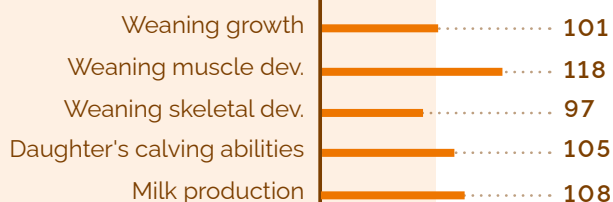
124

IVMAT

BL.PF.24.1(CD 0.52)

Recommended for the daughters of:

IPOD, ILLUSTRÉ, JABU, LARGO, LARRONDO, MAGIC, NOTOS, ONDENC



LARGO

N°1 FOR FRENCH BREEDERS



N°FR3100035132

Born on 22/07/2015 à la SCEA CERON ERIC (31 PLAGNOLE)

Coat colouration gene: HOMOZYGOUS DARK

SIRE: HANNIBAL ♂ PGS: ETE
IVMAT : 115 ♀ PGD: DALIDA

DAM: FINLANDE ♀ MGS: DOM TOM
ISU : 113 ♀ MGD: CALYPSO

PROVEN TRAITS ON TESTED PROGENY

- ▶ Growth and muscling
- ▶ Fine bone structure and breed qualities
- ▶ Original pedigree



105

CALVING EASE

BL.PF.24.1 (CD 0.99)

113

ISEVR

BL.PF.24.1(CD 0.99)

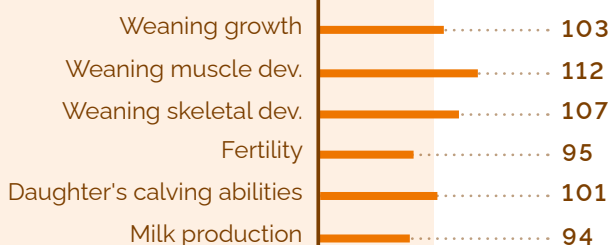
98

MATERNAL QUALITIES

BL.QM.24

Recommended for the daughters of:

FUXEEN, GAELIC, GALIAX, GINKGO, HASHTAG, JABU, MARENGO



EASY CALVING

"I WANT SOMETHING NEW."

We are offering you immediate access to a selection of young sires that are currently being evaluated.

Bulls with very favourable genomic tendencies resulting from genetic selection by AURIVA's technicians of cow lineages with proven production potential.

A PREVIEW BULL MEANS:



High-adult morphological potential



High genomic EBVs



Genetic accumulation along exceptional pedigrees

THE BEST BULLS IN THE SECTOR

TENGU

SIRE: MAGIC
MGS: VACHERIN



MAIN HIGHLIGHTS:

- ORIGINAL GENETIC
- GROWTH
- HIGHLY PRODUCTIVE MATERNAL LINE

RECOMMENDED FOR THE DAUGHTERS OF:

GALIAX, HENAN, MEKONG

TARANIS

SIRE: GAELIC
MGS: JACOB



MAIN HIGHLIGHTS:

- ACCUMULATION OF MATERNAL TRAITS
- BREED QUALITIES
- AN ORIGINAL, LITTLE OR UNUSED LINE

RECOMMENDED FOR THE DAUGHTERS OF:

LARGO, NARUTO, MARENGO

TENGU

NEW

POWER AND ORIGINALITY



N°FR6415402890
 Born on 23/11/2022 at EARL TICOULET (64 VIELLESEGURE)
 Coat colouration gene: HOMOZYGOUS DARK

SIRE: MAGIC ♂
IVMAT: 107 ♂ PGS: CHERIF
 ♀ PGD: HAVANE

DAM: MIGNOUNE ♀
IFNAIS: 109 ♀ MGS: VACHERIN
 ♀ MGD: ARDIDE

EXPERT OPINION



- ▶ New and original genetic line
- ▶ Highly productive maternal line
- ▶ Growth potential

101

CALVING EASE

BL.PF.24.1 (CD 0.59)

114

ISEVR

BL.PF.24.1(CD 0.54)

115

IVMAT

BL.PF.24.1(CD 0.44)



TARANIS

NEW

ACCUMULATION OF GENETIC BENEFITS



N°FR6415121344
 Born on 24/07/2022 at GAEC ETCHEBEHERE (64 IRISSARRY)
 Coat colouration gene: HOMOZYGOUS DARK

SIRE: GAELIC ♂
IVMAT: 117 ♂ PGS: VELOURS
 ♀ PGD: CAMOMILLE

DAM: NOISSETTE ♀
IVMAT: 111 ♀ MGS: JACOB
 ♀ MGD: FRENELLE

EXPERT OPINION



- ▶ Original genetic line with maternal qualities
- ▶ Fine bone structure and breed qualities
- ▶ Good functionals

102

CALVING EASE

BL.PF.24.1 (CD 0.57)

106

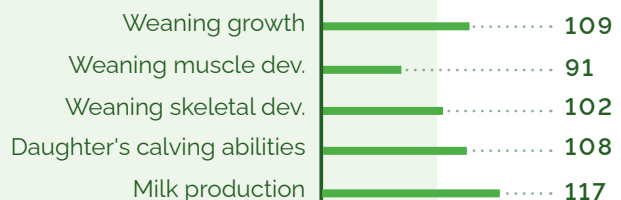
ISEVR

BL.PF.24.1(CD 0.51)

121

IVMAT

BL.PF.24.1(CD 0.46)



"I WANT IT ALL... EXCEPT HORNS."

With 4 bulls in its polled range of sires, AURIVA offers you both heterozygous and homozygous bulls naturally carrying the polled gene for polled progeny without compromising the quality of other breed traits.

The result of work begun in 2007 on lines of cows with high genetic value that we mated with bulls carrying the foreign naturally polled gene. Following several generations of careful genetic selection, we are now able to offer farmers polled sires capable of competing with their horned counterparts.

Alongside NIBIRU, who has already proven his worth through his progeny, you can now use the semen of SELF P, a heterozygote sire and two Homozygous sires, RELAX PP and SIGMA PP.

NO HORNS AND NO GUILT!

Benjamin Pons rears 95 Blonde d'Aquitaine cows at Bozouls in the Aveyron département, following in the footsteps of his father, still active on the farm, who decided on the Blond breed over 30 years ago when he first started the herd. A big fan of the breed and its qualities, Benjamin has been using AURIVA naturally polled genetics since MASTER was added to our catalogue.

In search of maternal qualities, conformation and docility for his herd, he inseminates 80% of his herd, a third of which is now polled.

"I dislike de-horning calves, and I personally find a polled Blond cow just as attractive as one with horns. The aim is to have a fully polled herd within the next few years to avoid having to de-horn and of course for livestock and farmer safety. Also, I am convinced that buyers will increasingly be looking for polled livestock. I hope to be in a position to sell naturally polled breeding stock in the future."



On the left, Jean-Luc Boudou (Inseminator), with Benjamin Pons and his herd of Blondes d'Aquitaine

Working in complete confidence with the inseminator Jean-Luc Boudou, Benjamin chooses the bulls that will 'make his life easier'. He has been working on the farm for just a few months now, and for him easy calving is paramount. "Last year I used PYHA and ONDENC to be sure that calving, which usually occurs in September when we are busy sowing, was

trouble-free. I also use other bulls in the catalogue depending on the cows to be bred from."



Daughters of NIBIRU

"I sell my fat cows and heifers locally, plus my stores and a few other females. Livestock performance, with or without horns, is an important criterion. Being polled is not a sufficient factor as the calves have to be good too. You don't breed polled livestock just for the sake of them being polled, they have to be equally good as horned livestock. I am highly satisfied with NIBIRU and his progeny, keeping back 11 of his heifers as replacements as they are very good. I also kept back 3 daughters of MASTER, and some RELAX PP heifers with which I am equally happy."

"A few more daughters of SIGMA PP, plus a few SELF P, should be arriving in the autumn, just a few as I am looking primarily for mixed animals. I am really looking forward to their arrival. I can't wait!"

NIBIRU

NO HORNS, BUT NO CONCESSIONS EITHER



N°FR4747484926

Born on 24/12/2017 at the AURIVA Station(47 LABASTIDE CASTEL AMOUROUX)

Coat colouration gene: HETEROZYGOUS

Polled Gene : HETEROZYGOUS

SIRE: HORFE ♂ **PGS: ETE**
IVMAT: 107 ♀ **PGD: EURASIENNE**

DAM: 3048 ♀ **MGS: BRAVOUR**
AVel: 114 ♀ **MGD: SUCCES**

PROVEN TRAITS ON TESTED PROGENY

- ▶ Muscling potential
- ▶ Breed qualities
- ▶ Good functionals



102

CALVING EASE

BL.PF.24.1 (CD 0.97)

105

ISEVR

BL.PF.24.1(CD 0.92)

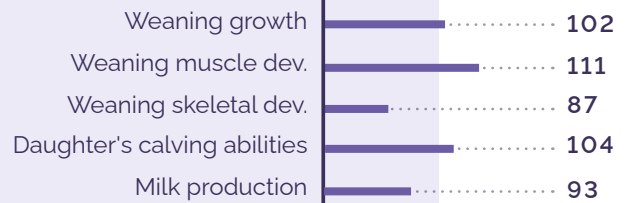
96

IVMAT

BL.PF.24.1(CD 0.62)

Recommended for the daughters of:

CABREL, FRENCHY, FUXEEN, GAELIC, GALIAX, JABU, MEKONG



SELF P

EXCEPTIONAL PERFORMANCE



N°FR1222010414

Born on 11/10/2021 at GAEC CANNAC (12 LA SELVE)

Coat colouration gene: HOMOZYGOUS DARK

Polled Gene : HÉTÉROZYGOTE

SIRE: JOLIUS ♂ **PGS: ETANDART**
IVMAT: 100 ♀ **PGD: FLORE**

DAM: NAPHTALINE ♀ **MGS: IAN**
DMsev: 115 ♀ **MGD: DENTELLE**

EXPERT OPINION

- ▶ High growth potential
- ▶ Muscle definition
- ▶ Breed qualities



104

CALVING EASE

BL.PF.24.1 (CD 0.59)

119

ISEVR

BL.PF.24.1(CD 0.53)

112

IVMAT

BL.PF.24.1(CD 0.44)



RELAX PP

100% POLLED



FR8564825250
 Born on 04/01/2020 at GAEC DU BREUIL (85 ST PHILBERT DE BOUAINÉ)
 Coat colouration gene: HOMOZYGOUS DARK
 Polled Gene : HOMOZYGOUS

SIRE: MACAO ♂
IFNAIS : 109

♂ PGS: ARAMIS
 ♀ PGD: ITXASOA

DAM: NOVINA ♀
DMsev : 111

♂ MGS: BRAVOUR
 ♀ MGD: DAVINA

PROVEN TRAITS ON TESTED PROGENY

- ▶ Uniformity in progeny
- ▶ Good mixed type
- ▶ Functional strength



100

CALVING EASE

BL.PF.24.1 (CD 0.88)

101

ISEVR

BL.PF.24.1(CD 0.58)

98

IVMAT

BL.PF.24.1(CD 0.42)

Recommended for the daughters of:
 FUXEEN, GAELIC, GALIAX, HORFE, HASHTAG



SIGMA PP

NEW 100% POLLED



Subject to production availability

N°FR6415241185
 Born on 05/09/2021 at GAEC SALARIA (64 IBAROLLE)
 Coat colouration gene: HOMOZYGOUS DARK
 Polled Gene : HOMOZYGOUS

SIRE: LELAPS ♂
DMci : 100

♂ PGS: CESAR CHRI
 ♀ PGD: VOLGA

DAM: OLYMPE ♀

♂ MGS: FANION
 ♀ MGD: LEONIE

EXPERT OPINION

- ▶ Mixed format
- ▶ Functional strength
- ▶ Original pedigree



STEWBALL

THE STUFF OF CHAMPIONS

NEW



N°FR8220211210

Born on 09/05/2021 à la SCEA SAZY ELEVAGE (82 CAUMONT)

Coat colouration gene: HOMOZYGOUS DARK

SIRE: NARCOS ♂ PGS: IVAN
AVel: 113 ♂ PGD: HILARY

DAM: OVIDIE ♀ MGS: ILLICO
ISEVR: 111 ♀ MGD: LUDMILA

EXPERT OPINION



- ▶ Prestigious pedigree
- ▶ Qualified RJJ sire in the testing station
- ▶ Breed qualities and exceptional conformation

98

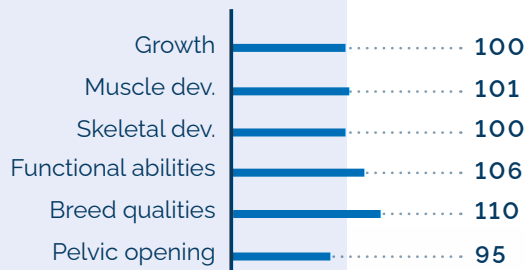
CALVING EASE

BL.PF.24.1 (CD 0.51)

103

IMOCR

BL.PF.24.1 (CD 0.38)



IBOVAL BULLS

MELKIOR

FAST GROWTH



N°FR6414636024

Born on 24/12/2016 at M LAFITTE (64 SEMEACQ BLACHON)

Coat colouration gene: HETEROZYGOUS

SIRE: ISIDOR ♂
IFNAIS : 121

♂ PGS: VIVALDI
♀ PGD: BAGUE

DAM: ESTELLE ♀
DMsev : 124

♂ MGS: PIFROU
♀ MGD: TRUFFE

EXPERT OPINION



- ▶ Very easy calving
- ▶ Very fast growth potential
- ▶ An accumulation of beef abilities genetics

114

CALVING EASE

BL.PF.24.1 (CD 0.84)

117

BEEF ABILITIES

BL.VF.24.1(CD 0.55)



NAHIKO

HIGHLY MUSCLED!



N°FR6414637450

Born on 01/12/2017 à la SCEA BISCAY (64 OSTABAT ASME)

Coat colouration gene: HETEROZYGOUS

SIRE: GEXAN ♂
DMsev : 128

♂ PGS: VIVALDI
♀ PGD: EDERRA

DAM: FADELA ♀
IVMAT : 110

♂ MGS: SUPER
♀ MGD: CELIMENE

EXPERT OPINION



- ▶ Muscle definition
- ▶ Good easy calving
- ▶ Growth and fast finishing

108

CALVING EASE

BL.PF.24.1 (CD 0.88)

111

ISEVR

BL.PF.24.1(CD 0.68)



GLACON

EASY AND EARLY MEAT REFERENCE



N°FR6413181065

Born on 05/09/2011 at GAEC MAITRENIA (64 LABELS BISCAY)

Coat colouration gene: -

SIRE: POKER ♂
IFNAIS : 125

♂ PGS: EDER
♀ PGD: HEROINE

DAM: CHANTILLY ♀
IFNAIS : 110

♂ MGS: NICODEME
♀ MGD: TARTE

EXPERT OPINION



- ▶ Optimal calving aptitude
- ▶ Muscle conformation
- ▶ Meat colour

119

CALVING EASE

BL.PF.24.1 (CD 0.99)

118

BEEF ABILITIES

BL.VF.24.1(CD 0.83)



GAZOU

COLOUR AND COMPACT



N°FR1211079042

Born on 22/08/2011 at GAEC DE RULHAGUET (12 RULHAC ST CIRQ)

Coat colouration gene: -

SIRE: VIVALDI ♂
IFNAIS : 116

♂ PGS: NICODEME
♀ PGD: PAVOTE

DAM: URGARDA ♀
IFNAIS : 100

♂ MGS: MESSENGER
♀ MGD: SIMBA

EXPERT OPINION



- ▶ Muscle compact
- ▶ Very early finishing
- ▶ Good calving ease

111

CALVING EASE

BL.PF.24.1 (CD 0.99)

124

BEEF ABILITIES

BL.VF.24.1(CD 0.96)



	NAME	Num.	N° IE	SIRE	MGS	IFNAIS	CD	IFNAIS	CRqms	DMqms	DSqms	IMOCRqms	IFERqms	
EQUILIBRE	NEW PATUA **	FR6414989957	7996262	FUXEEN	ELDORADO	99	0.88		103	104	98	103	101	
	NEW PALLAS	FR6414648189	7996260	GALIAX	TOKAPI	96	0.89		109	116	107	113	86	
	NEW PEGASE	FR5355989467	7996259	GALIAX	ORVIL	100	0.89		90	110	87	94	96	
	ORIGAMI	FR6414787866	7995013	FUXEEN	CLIMAX	97	0.89		91	85	91	86	92	
	NARKO	FR6414756075	7994279	JUNIO	ARAMIS	98	0.97		109	108	104	110	103	
	NEKETI	FR6414656782	7993070	GAELIC	TOKAPI	93	0.99		110	110	113	113	95	
	NACERY	FR5655921562	7993064	EDISON	ANGELO	97	0.97		109	113	102	110	97	
	NARUTO	FR7934931978	7993072	JACKPOT	FRELON	95	0.99		119	122	134	129	99	
	MARENGO	FR3100275553	7991584	FUXEEN	VALIUM	94	0.99		106	109	106	109	100	
	MAGIC	FR4466720331	7991586	CHERIF	CESAR	98	0.99		97	92	111	98	100	
	LEGO	FR8160146119	7991595	HORFE	VIDOCQ	103	0.95		97	115	92	102	103	
	MORPHOLOGY	RAPACE	FR6415469481	79A0033	JABU	CALINO	106	0.91						
		PANTZO	FR6414789608	7997438	IODELYS	BERLIOZ	94	0.91						
NEW PONT AVEN		FR2278511355	7997017	MARVELOUS	FABULEUX	103	0.89							
NEW PEPINO		FR4474581709	7996257	HORFE	BRASIER	106	0.91		104	111	113	110	101	
MORZINE		FR4433554042	7992378	HAREM	FUNKY	89	0.90		97	88	100	93	104	
LATINO		FR8564824755	7990676	HIPSTER	BERLIOZ	91	0.94		103	94	115	103	98	
JABU		FR4908403113	7987879	ANIS	THEODULE	97	0.99							
EASY CALVING	NEW RAMI	FR8160031547	79A0132	HASHTAG	FUXEEN	121	0.83							
	ROD	FR7959374057	7998600	JABU	FAUCON	110	0.92							
	PITCHOUN	FR7969741300	7997022	HASHTAG	ELDORADO	114	0.91							
	PYHA	FR3330237891	7996057	FUXEEN	HOULALA	114	0.99		104	104	104	105	86	
	ONDENC	FR8160168929	7995014	FROOME	CLIMAX	106	0.99		108	98	103	105	90	
	LARGO	FR3100035132	7990671	HANNIBAL	DOM TOM	105	0.99		103	107	110	107	95	
	HASHTAG	FR3100361906	7984446	ARAMIS	ANGELO	123	0.99		83	112	90	91	95	
	GAELIC	FR5343396600	7982896	VELOURS	LEO	106	0.99		103	101	95	101	97	
	ANGELO	FR5343396363	7970017	PANTHEON	CRACK	110	0.99		100	104	94	100	103	
	ARAMIS	FR2231849207	7970015	LEO	INEDIT	115	0.99		87	110	89	93	99	
EARLY PREVIEW	NEW TENGU	FR6415402890	79A2896	MAGIC	VACHERIN	101	0.59							
	NEW TARANIS	FR6415121344	79A2464	GAELIC	JACOB	102	0.57							
POLLED	SELF P	FR1222010414	79A1548	JOLIUS	IAN	104	0.59							
	SIGMA PP **	FR6415241185	79A1553	LELAPS	FANION									
	RELAX PP	FR8564825250	7997444	MACAO	BRAVOUR	100	0.88							
	NIBIRU P	FR4747484926	7995052	HORFE	BRAVOUR	102	0.97							
	PIROL PP *	DE000359249807	79A0752	PLAYBOY	URANUS									
IBOVAL SELECTION	NEW STEWBALL	FR8220211210	79A1557	NARCOS	ILLICO	98	0.51							
	MAGNIFIC	FR6414486487	7996312	ARLEQUIN	SCOUT	83	0.94							
	LOPEZ	FR8160035916	7994832	GUERNICA	CRENCA	88	0.97							
	JOLIUS	FR8214011280	7992936	ETENDART	UNIVERS	96	0.97							
	IODELYS	FR1415981963	7993931	FROMANT	DIOR	85	0.98							

	NAME	Num.	N° IE	SIRE	MGS	IFNAIS	CD	IFNAIS	IFN ^{kt}	CD	IFN ^{kt}	ICRCvbf	CONFvbf	COULvbf	IABvbf
YOUNG MEAT BULLS	NAHIKO	FR6414637450	7995053	GEXAN	SUPER	108	0.88	106	0.89						
	MELKIOR	FR6414636024	7993077	ISIDOR	PIFROU	114	0.84	105	0.87						
	MEGALITH	FR1217103089	7992365	FOLKER	VIVALDI	112	0.90	108	0.9	88	110	96	94		
	JOYSTICK	FR1215168101	7989244	BRAVOUR	MALINOIS	98	0.94	99	0.91	98	104	99	100		
	GLACON	FR6413181065	7983541	POKER	NICODEME	119	0.99	114	0.95	92	116	108	105		
	GAZOU	FR1211079042	7982880	VIVALDI	MESSAGER	111	0.99	109	0.98	102	120	107	115		

Maternal qualities index

CR: Growth (at 18 months)
 DM: Muscle Development (at 18 months)
 DS: Skeletal Development (at 18 months)
 IMOCR: Morphology merit
 IFER: Fertility
 IVEL: Daughter's calving abilities
 IMER: Suckling abilities

PLait: Milk production
 IQM: Station maternal merit

IBOVAL index

IFNAIS: Calving ease
 CR sev: Growth potential at weaning
 DM sev: Weaning muscle development
 DS sev: Weaning Skeletal Development
 ISEVR: Weaning merit
 CD: Accuracy
 AVEL: Calving Capability
 ALait: Daughter's milk - milking abilities

IVMAT: Farm maternal merit
 FOSsev: Bone fineness
 CRpsf: Post-Weaning Growth
 COMPsev: Temperament/docility of calves at wean scoring

QUALITIES				IBOVAL BL.PF 24.1												FARM YOUNG BULLS BL.PF 24.1				FARM POST WEANING BL.PF 24.1	
IVELqms	IMERqms	PLaitqms	IQMqms	CRsev	DMsev	DSsev	ISEVR	CD ISEVR	FOSsev	AVEL	ALait	IVMAT	CD IVMAT	COMPsev	CD COMPsev	ICRCjbf	CONFjbf	IABjbf	CD IABjbf	CRpsf	CD CRpsf
101	104	108	104	110	108	95	112	0.76	98	115	98	109	0.55	102	0.55	110	106			99	0.74
97	112	109	112	96	113	92	97	0.82	106	109	115	114	0.58	97	0.58	98	108	102	0.54	100	0.78
98	111	113	99	85	114	87	88	0.82	112	106	119	110	0.58	109	0.61	87	102	90	0.56	85	0.76
111	99	109	93	106	102	104	107	0.80	92	107	110	117	0.61	97	0.59	93	104	96	0.54		
101	99	98	106	117	109	112	122	0.92	100	103	95	115	0.64	99	0.79	106	106	109	0.55		
112	101	98	112	99	108	102	99	0.95	108	118	104	110	0.69	101	0.87	95	107	99	0.58		
102	98	96	105	103	109	99	105	0.91	95	113	104	111	0.67	96	0.78	105	106	108	0.59		
119	93	96	121	120	123	116	132	0.98	97			121	0.59	96	0.96	111	122	122	0.84	116	0.90
106	95	101	105	102	115	101	106	0.98	95	116	95	106	0.73	107	0.95	106	113	112	0.91	104	0.93
100	94	93	98	100	109	109	106	0.98	99	106	98	107	0.75	96	0.95	106	108	110	0.93	106	0.93
96	101	99	101	96	117	102	107	0.89	103	89	113	117	0.67	97	0.73	105	111	110	0.63	96	0.80
				109	106	104	116	0.77	100	98	113	123	0.55	105	0.54	103	97				
				99	110	96	99	0.83	100	107	94	96	0.57	105	0.63	105	103	106	0.57		
				96	101	113	102	0.82	107	101		110	0.49	90	0.57	94	100				
106	93	97	106	106	106	112	115	0.84	97	107	103	118	0.58	110	0.62	113	103	114	0.58	105	0.78
97	99	107	95	109	106	112	108	0.81	96	104	105	115	0.61	104	0.58	107	100				
97	106	99	105	111	106	121	114	0.88	105	118	106	126	0.63	114	0.73	107	100	107	0.58	106	0.79
				112	101	114	113	0.99	100	94	109	119	0.95	106	0.98	106	98	104	0.96	114	0.97
				101	118	97	120	0.70	103	105	108	124	0.52			93	109				
				99	115	93	110	0.86	106	96	116	122	0.58	95	0.65	96	107	100	0.50		
				93	114	88	105	0.82	110	92	111	111	0.55	91	0.62	83	108	89	0.51		
97	102	109	102	105	109	101	118	0.97	98	111	109	125	0.63	103	0.90	105	106	108	0.58	106	0.82
103	101	104	103	116	109	101	124	0.98	94	96	101	117	0.68	110	0.94	109	107	112	0.84	109	0.88
101	87	94	98	103	112	107	113	0.99	104	104	90	104	0.80	99	0.98	100	99	99	0.95	98	0.96
109	110	110	101	90	110	86	105	0.99	108	87	110	108	0.92	98	0.98	82	111	90	0.95	89	0.96
116	103	101	107	100	101	93	102	0.99	105	113	115	117	0.98	108	0.98	91	94	89	0.98	100	0.98
103	103	95	103	99	101	90	103	0.99	102	104	107	108	0.98	91	0.98	105	102	106	0.98	96	0.98
101	114	110	102	93	113	90	106	0.99	111	83	109	108	0.99	94	0.99	88	111	95	0.99	83	0.99
				107	107	113	114	0.54	96	105		115	0.44								
				109	91	102	106	0.51	101	108	117	121	0.46			100	97				
				109	125	84	119	0.53	108			112	0.44								
				100	97	108	101	0.58	115	85		98	0.42			89	114				
				102	111	87	105	0.92	95	104	93	96	0.62	104	0.76	105	112	111	0.63		
				114	104	120	111	0.89	99	105	96	111	0.67	101	0.63	120	109	124	0.57		
				116	98	112	110	0.95	96	106	95	106	0.79	100	0.84	105	100	104	0.83	106	0.85
				100	110	100	102	0.96	100	99	97	100	0.75	101	0.87	93	101	94	0.80	100	0.87
				112	104	114	109	0.97	89	112	94	108	0.89	98	0.94	118	101	117	0.90	116	0.91

ABILITIES BL.VF 24.1						IBOVAL BL.PF 24.1							
CROSSBRED VEAL CALVES													
CD IABvbf	ICRCvbf	CONFvbf	COULVbf	IABvbf	CD IABvbf	CRsev	DMsev	DSsev	ISEVR	CD ISEVR	FOSsev	COMPsev	CD COMPsev
						105	127	60	111	0.68	105		
						94	125	70	104	0.69	110		
0.78	96	112	109	107	0.6	97	122	55	102	0.78	109	100	0.53
0.75	127	108	117	121	0.57	100	110	91	101	0.84	109	102	0.62
0.98	103	124	114	118	0.83	92	124	57	103	0.98	107	105	0.93
0.97	116	131	97	124	0.96	104	132	63	115	0.96	96	101	0.86

- GENETIC ORIGINALITY
 - SEXED FEMALE
 - SEXED MALE
 - SEXED FEMALE/MALE
 - SEXED ULTRA2M
 - SEXED ULTRA4M
 - * : Limited female-sexed availability
 - ** : Subject to female-sexed production Limited male-sexed availability
 - * : Limited availability of conventional semen
 - ** : Subject to conventional semen production
- sexed semen = approx. 90% deviation from the sex ratio

Young bulls on farm index

ICRCjbf: Young bull growth
CONFjbf: Young bull carcass conformation
IAB: Total beef merit (young bull)

Scores based on the performance of bull calves

Vealer on farm index

IFNxt: Birthing Ease is scored every year on the basis of weight information and birth conditions of Blonde x Holstein crossbred calves born on farms from test or service insemination.

ICRCvbf: Calves growth
CONFvbf: Young bulls Carcass conformation

COULvbf: Meat colour
IABvbf: Total beef merit (calves)

Scores based on the performance of veal calves

WHICH BULL ON which daughter?

		IMPROVE/ACCUMULATE			
ON DAUGHTERS OF	ON HEIFERS	MUSCLE DEVELOPMENT	SIZE	MATERNAL QUALITIES	MATINGS TO AVOID
ANIS		NARKO	LATINO	PALLAS	JABU/RAPACE/ROD
ARAMIS		NARUTO	RAPACE	PEPINO	HASHTAG/NARKO/PITCHOUN/RAMI
BERLIOZ		PATUA	NARUTO	PEGASE	LATINO/PANTZO
CABREL		PATUA	PEPINO	PEGASE	
CLIMAX		NARUTO	LATINO	PEGASE	ONDENC/ORIGAMI
CLIC		NACERY	PEPINO	PALLAS	
EDISON		NARKO	PONT AVEN	PEGASE	NACERY
ENVOL		PATUA	NEKETI	ONDENC	
FANION		NARKO	NARUTO	PATUA	JABU/SIGMA PP
FUXEEN	ROD	PANTZO	LATINO	NEKETI	MARENGO/ORIGAMI/PYHA/PATUA/RAMI
FRENCHY		PATUA	PONT AVEN	PALLAS	
GAELIC	PITCHOUN	NARUTO	LATINO	PATUA	NEKETI/TARANIS
GALIAX	ONDENC	NARUTO	PEPINO	NEKETI	LEGO/PALLAS/PATUA
GINKGO	PYHA	PATUA	PEPINO	NEKETI	
HASHTAG	ONDENC	PANTZO	PONT AVEN	ORIGAMI	NARKO/PITCHOUN/RAMI
HENAN	PYHA	PANTZO	NARUTO	ONDENC	NARKO/PITCHOUN/RAMI
ILLUSTRE	PYHA	PATUA	NARUTO	PEGASE	ONDENC/ORIGAMI
IPOD	ONDENC	NACERY	NARUTO	NEKETI	
JABU	RAMI	NARKO	NEKETI	PATUA	ROD/RAPACE
JOB	RAMI	NARUTO	PONT AVEN	NEKETI	ONDENC/ORIGAMI
LARGO	ONDENC	PEGASE	LATINO	PATUA	
LARRONDO	ROD	PATUA	LATINO	PALLAS	
LATSARI	PYHA	NARKO	PEPINO	PATUA	SIGMA PP
MAGIC	ONDENC	PATUA	LATINO	PEGASE	TENGU
MARENGO	ROD	NARKO	RAPACE	LATINO	ORIGAMI/PATUA/PYHA
MEKONG	PYHA	PATUA	PONT AVEN	ORIGAMI	SIGMA PP
NACERY	ROD	NARUTO	PEPINO	NEKETI	
NARKO	PYHA	PEGASE	RAPACE	ORIGAMI	PITCHOUN/RAMI
NARUTO	PYHA	PEGASE	RAPACE	ORIGAMI	
NEKETI	PITCHOUN	PANTZO	RAPACE	PATUA	TARANIS/PALLAS
NIBIRU	PYHA	PATUA	LATINO	PEGASE	PEPINO
NOTOS	RAMI	PEGASE	LATINO	PATUA	
ONDENC	ROD	PANTZO	PEPINO	PATUA	ORIGAMI

OUR TEAM AT YOUR HERD'S SERVICE

Would you like to order straws of AURIVA Blonde d'Aquitaine bulls for AI ? Please contact :

- ▶ **in France** : AURIVA-Elevage - commercial@auriva-elevage.com - + 33 5 56 30 75 66
- ▶ **in Spain** : EVOLUTION Iberica - evolution@evolutioniberica.es - + 34 980 63 40 88
- ▶ **everywhere else in the world** : SYNETICS Export - synetics.export@synetics.world - +33 2 99 85 21 40

Do you want to increase the number of your herd's best bloodlines and prepare the next generation of breeding stock?

With AURIVA's Biotechnology Division, you can quickly improve the genetics of your livestock. Using embryo transplants you can, among other things:



- ▶ Add further value to your very best females
- ▶ Accelerate herd genetics
- ▶ Generate an additional source of income

To access our embryo catalogue,
just scan this QR code:



For all enquiries, advice, mating plans, ordering semen straws or embryos, just contact our team:



David Gonzales

Blond genetics advisor:

david.gonzales@auriva-elevage.com

0033 (0)7 56 02 32 70



Pierre Etchecopar

Blond genetics advisor:

pierre.etchecopar@auriva-elevage.com

0033 (0)7 86 10 74 68



Loli Castet

Meat genetics department:

loli.castet@auriva-elevage.com

0033 (0)5 63 82 52 75

And keep up to date with all the latest news
on the best Blond genetics via our new FB page:



WOULD YOU LIKE TO TAKE PART, OR ARE YOU ALREADY TAKING PART, IN OUR PROGENY CONFIRMATION SCHEME?

Check out the brochure
of AURIZON Blonde d'Aquitaine bulls:





FOR ANY ENQUIRIES, PLEASE CONTACT



In France : AURIVA-Elevage - commercial@auriva-elevage.com - + 33 5 56 30 75 66

In Spain : EVOLUTION Iberica - evolution@evolutioniberica.es - + 34 980 63 40 88

Everywhere else in the world : SYNETICS Export - synetics.export@synetics.world - +33 2 99 85 21 40

